

COLOR OPTIONS

QUARTZ WHITE PEARL



JET BLACK MICA



STERLING SILVER METALLIC



GRAPHITE GRAY METALLIC

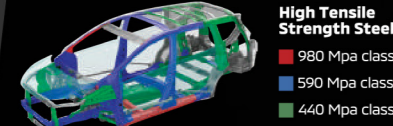


SUNRISE ORANGE METALLIC



SAFETY FEATURES

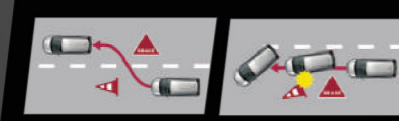
RISE (REINFORCED IMPACT SAFETY EVOLUTION) BODY



High Tensile Strength Steel
 980 Mpa class
 590 Mpa class
 440 Mpa class

Teknologi rangka bodi yang kokoh dirancang khusus sesuai standar semua kendaraan Mitsubishi untuk memberikan keamanan terbaik dalam berkendara.

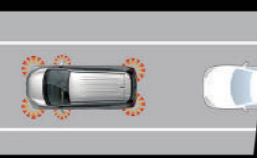
ABS (ANTI-LOCK BRAKING SYSTEM) & EBD (ELECTRONIC BRAKE-FORCE DISTRIBUTION)



WITH ABS WITHOUT ABS

Fitur yang membantu Anda mengatur laju kendaraan dan menghindari rem terkunci saat melakukan pengereman atau saat melintasi jalan licin.

ESS (EMERGENCY STOP SIGNAL)



Saat menginjak rem di situasi darurat, hazard akan menyala secara otomatis memperingatkan kendaraan belakang untuk mencegah terjadinya benturan.

NEW PARKING SENSOR WITH REAR CAMERA



Dilengkapi Sensor Parkir terhubung dengan layar audio melalui Rear Camera, yang akan berbunyi bila ada objek menghalangi saat mundur.

HSA (HILL START ASSIST)



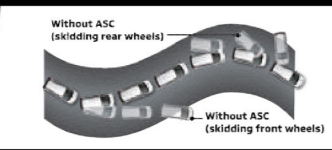
WITH HSA



WITHOUT HSA

Mengaktifkan rem secara otomatis selama beberapa detik saat akan melaju di jalan menanjak, sehingga mobil tidak bergerak mundur.

ASC (ACTIVE STABILITY CONTROL)



Without ASC (skidding rear wheels)
 Without ASC (skidding front wheels)

Fitur yang secara otomatis bekerja mengontrol laju saat mobil bermanuver di jalanan licin sehingga tidak mudah tergelincir.

DUAL SRS AIRBAGS



Menambah keamanan di bangku depan apabila terjadi benturan pada saat berkendara.

SPESIFIKASI*

| | XPANDER CROSS | |
|--|---------------|----|
| | AT | MT |

| DIMENSION & WEIGHT | | |
|--------------------|----|------|
| Overall Length | mm | 4500 |
| Overall Width | mm | 1800 |
| Overall Height | mm | 1750 |
| Ground Clearance | mm | 225 |
| Seating Capacity | | 7 |

| ENGINE | | |
|--------------------|-------------|--------------------------|
| Engine Type | | 1.5L MIVEC DOHC 16 Valve |
| Displacement | cc | 1499 |
| Maximum Power | kW (PS)/rpm | 77 (105)/6000 |
| Max. Torque | Nm/rpm | 141/4000 |
| Fuel Tank Capacity | Litre | 45 |

| PERFORMANCE | | |
|----------------|------------|-----------------------------------|
| Transmission | 4 Speed AT | 5 Speed MT |
| Suspension | Front | MacPherson Strut with Coil Spring |
| | Rear | Torsion Beam |
| Brake | Front | Disc Brake |
| | Rear | Drum Brake |
| Cruise Control | Available | Not Available |

| INTERIOR | |
|---------------------------------------|--|
| Steering wheel | Leather-wrapped Steering Wheel with Hands Free Switch |
| Tilt & Telescopic Steering | Available |
| Seat Material | High Grade Fabric Seat |
| Gear Shift Knob & Parking Brake Lever | Leather-wrapped |
| Audio System | Wide 2 Din touchscreen audio with • AM/FM Radio • USB player • iPhone/iPad/iPod • Bluetooth with hands-free function • Voice recognition • Smartphone Connectivity |

*Spesifikasi dapat berubah sewaktu-waktu.

| | XPANDER CROSS | |
|--|---------------|----|
| | AT | MT |

| EXTERIOR | | |
|-----------------------|---------------------------------|--|
| Wheel & Tire | Two-tone Alloy Wheel 205/55 R17 | |
| Front Headlamp | LED | |
| Position Lamp | LED | |
| Fog Lamp | LED | |
| Rear Combination Lamp | LED (Body & Rear Gate) | |

| SAFETY & SECURITY | | |
|---|-----------|--|
| ABS + EBD | Available | |
| Brake Assist (BA) | Available | |
| Dual SRS Airbags | Available | |
| Seatbelt | Front Row | 3P ELR seatbelt pretensioner x 2 with force limiter and seatbelt reminder buzzer |
| | 2nd Row | 3P ELR seatbelt x 3 |
| | 3rd Row | 3P ELR seatbelt x 2 |
| ISO-FIX Child Seat Anchor x 2 for 2nd Row Seat | Available | |
| Active Stability & Traction Control (ASC + TCL) | Available | |
| Hill Start Assist (HSA) | Available | |
| Parking Sensor + Rear View Camera | Available | |
| Keyless Operation System | Available | |
| Immobilizer with Security Alarm | Available | |

PREMIUM PACKAGE*



LEATHER SEAT

ENGINE HOOD EMBLEM

V-KOOL™

*Paket hanya tersedia untuk XPANDER Cross AT.

DI MANA PUN ANDA, KAMI SELALU ADA

Di mana pun dan ke mana pun tujuan Anda bersama keluarga, Mitsubishi Motors dengan 300* jaringan penjualan siap memberikan pelayanan yang terbaik.

LAYANAN SALES
300*
 JARINGAN PENJUALAN

Jaringan luas dan akan terus berkembang.
 *Data per November 2019.



SALES

Memiliki 300* jaringan penjualan yang tersebar dan akan terus berkembang, kami selalu ada untuk memberikan layanan sepenuh hati.

SERVIS

Layanan perawatan dan perbaikan yang didukung mekanik handal berpengalaman, peralatan bengkel canggih, serta ruang tunggu yang nyaman.

SUKU CADANG & JAMINAN

Menyediakan suku cadang yang lengkap dan asli di setiap jaringan spareparts. Kami juga memberikan garansi service untuk menjamin kepuasan Anda.



PT Mitsubishi Motors Krama Yudha Sales Indonesia

www.mitsubishi-motors.co.id

1300-300300

1300-300300

1300-300300

1300-300300

1300-300300

1300-300300

1300-300300

1300-300300

1300-300300

1300-300300

1300-300300

1300-300300

1300-300300

1300-300300

1300-300300

1300-300300

1300-300300

1300-300300

1300-300300

1300-300300

1300-300300

1300-300300

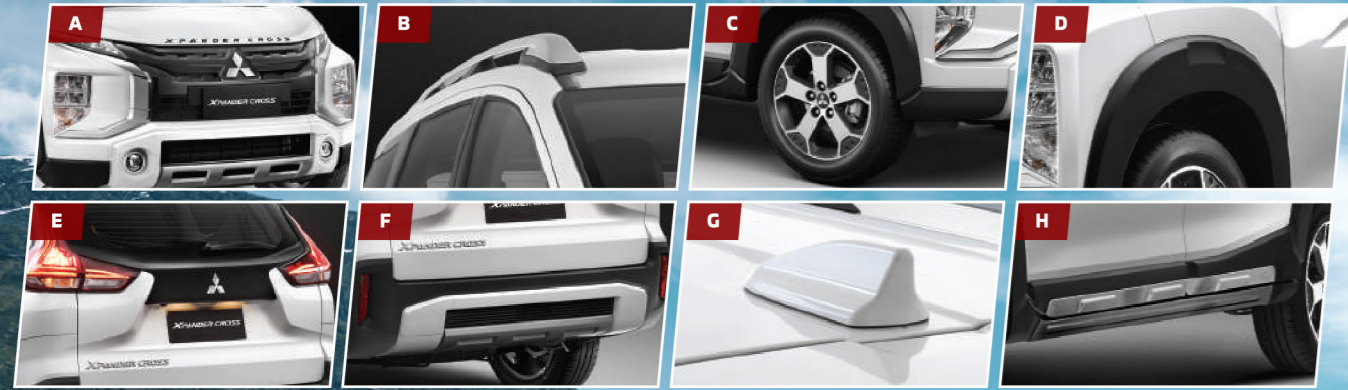
1300-300300



Drive your Ambition

Nov/19





ROBUST DESIGN

**DON'T STOP.
XPAND YOUR
ADVENTURE
TODAY.**

- A. **NEW** FRONT GRILLE & BUMPER
- B. **NEW** ROOF RAIL
- C. **NEW** 17-INCH ALLOY WHEEL
- D. **NEW** WHEEL ARCH MOLDING
- E. **NEW** TAILGATE GARNISH
- F. **NEW** REAR BUMPER
- G. **NEW** SHARK FIN ANTENNA
- H. **NEW** SIDE BODY GARNISH
- I. **NEW** LED HEAD LAMP & LED FOG LAMP
- J. **NEW** REAR WINDOW DEFOGGER
- K. **NEW** AUTO-FOLDING DOOR MIRROR



- A. HIGH GROUND CLEARANCE 225mm
- B. SPECIAL TUNED SUSPENSION WITH REBOUND SPRING
- C. ENGINE MIVEC 1.5L
- D. GOOD VISIBILITY (DENGAN KACA DEPAN LUAS DAN POSISI DUDUK YANG TINGGI)
- E. CRUISE CONTROL



RELIABLE DRIVING PERFORMANCE

**YOU DESERVE
THE BEST OF
EVERYTHING.**

*PREMIUM PACKAGE EXTERIOR



COMFORTABLE & LUXURIOUS INTERIOR

- A. DUAL TONE LEATHER SEAT*
- B. 7-INCH AUDIO HEAD UNIT WITH SMARTPHONE CONNECTIVITY
- C. TWO TONE LUXURIOUS INTERIOR
- D. KURSI BARIS KETIGA YANG LUAS
- E. TILT & TELESCOPIC STEERING
- F. START/STOP BUTTON & KOS (KUNCI REMOTE)
- G. SOUNDPROOF CABIN

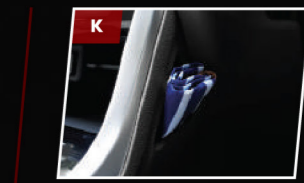
POWER OUTLET

- H. DEPAN
- I. TENGAH
- J. BELAKANG

STORAGES

- K. INSTRUMENT PANEL SIDE POCKET
- L. CUP HOLDER DEPAN
- M. KOTAK PENYIMPANAN TERTUTUP
- N. SEAT BACK POCKET MULTIFUNGSIONAL
- O. GANTUNGAN SERBAGUNA
- P. LACI BAWAH KURSI SERBAGUNA
- Q. RUANG PENYIMPANAN SERBAGUNA DI BAGASI

**IF YOU'RE READY TO GO ALL IN
EVERYTHING IS PREPARED FOR YOU.**



*PREMIUM PACKAGE INTERIOR